



Cube Small

LedsC4 Team

PX-0056-GRI

Surface-mounted wall light IP44 Cube Small GU10 16W Grey

TECHNICAL FEATURES



IP44 IK03



Luminaire total power : 16W

Structure material : Steel

Structure finish : Grey

Diffuser material : Glass

Diffuser finish : Transparent

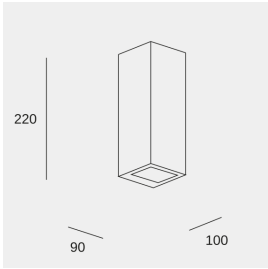
Max. size of light bulb : 70/75 mm

Recommended light bulb : GU10

Voltage / frequency : 100-240V ~ 50/60Hz

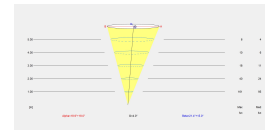
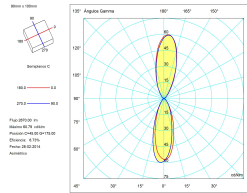
Warranty : 5 Years

Easily recyclable luminaire



LUMINOTECHNIC FEATURES

Lampholder	Quantity	Light source power (W)	Correlated Colour Temperature (CCT)
GU10	2	Max. power 8W	-



LOGISTICS

Net weight (kg): 0.84

Packaged weight (kg): 0.95

Packaging: 110mm x 100mm x 230mm



Luminaire

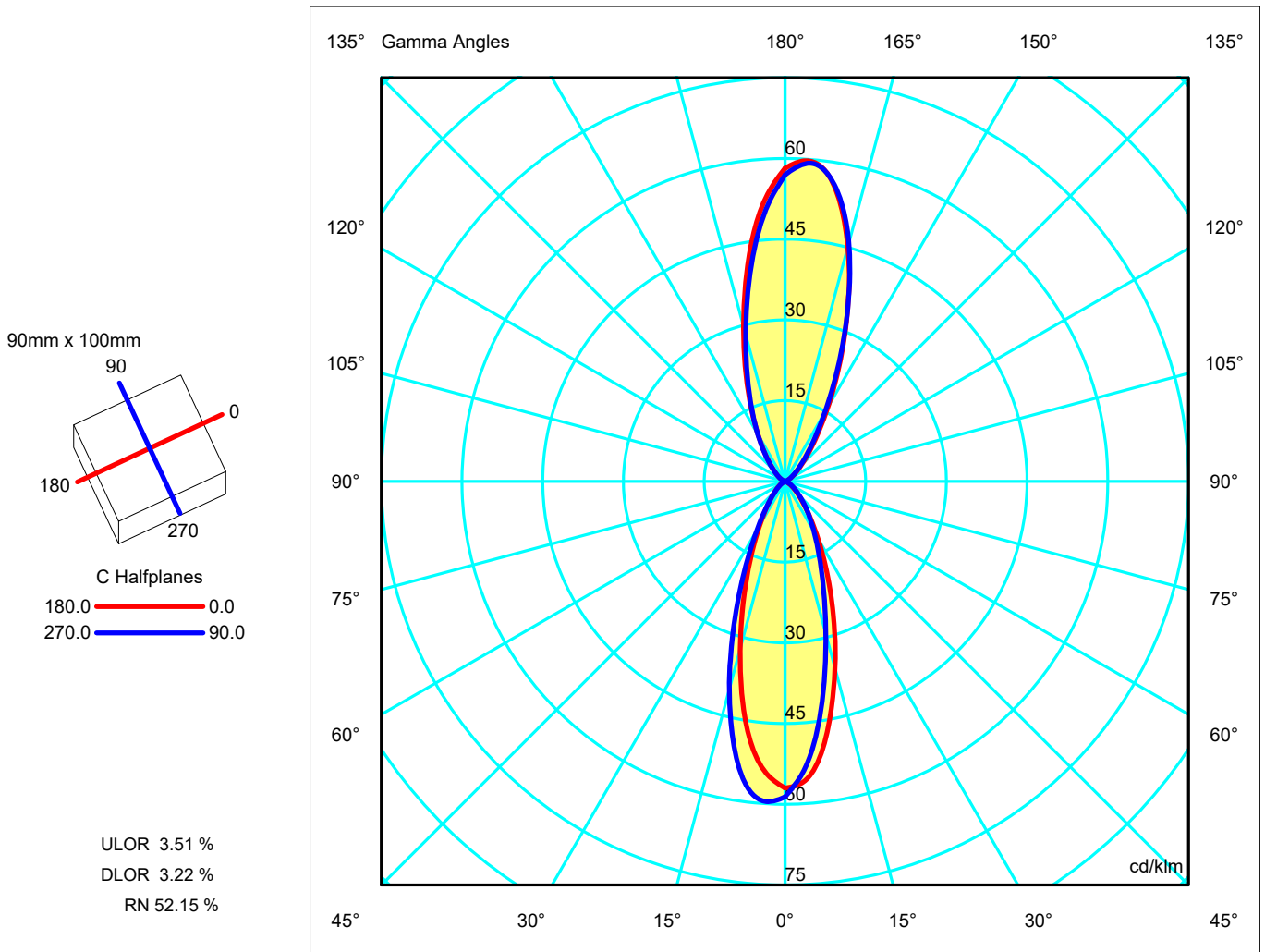
Code PX-0056-GRI
Name WALL FIXTURES

Measur.

Code PX-0056-GRI
Name WALL FIXTURES

Luminaire Flux	179.59 lm	Luminaire Power	63.80 W	Efficacy	2.81 lm/W	Efficiency	6.73%
Lamps Flux	2670.00 lm	Maximum value	60.79 cd/klm	Position	C=45.00 G=175.00	CG	Asymmetrical
Rectangular Luminaire Rectangular Luminous Area	Length Length	90 mm 90 mm	Width Width	100 mm 100 mm	Height Height	220 mm 219 mm	
Horizontal Luminous Area Emitting area on Plane 0° Emitting area on Plane 90°	0.009000 m2 0.019800 m2 0.022000 m2	Emitting area on Plane 180° Emitting area on Plane 270° Glare area at 76°	0.019800 m2 0.022000 m2 0.021389 m2				
Coordinate system Date Measurement Distance	CG 28-02-2014 0.00	Symmetry Type Maximum Gamma Angle Measurement Flux	Asymmetrical 180 2670.00 lm				
Operator Temperature Humidity Notes	25.00 °C 60.00 %	Source Voltage [V] Source current [A] Photocell					

Line	Code	Luminaire Lamps Name	Flux [lm]	Pow. [W]	Q.ty
	11	11	1335.00	31.90	2
C.I.E. F UTE	87 98 100 48 7 0.03 A + 0.04 T	D DIN 5040 B NBN	C62 BZ 1		





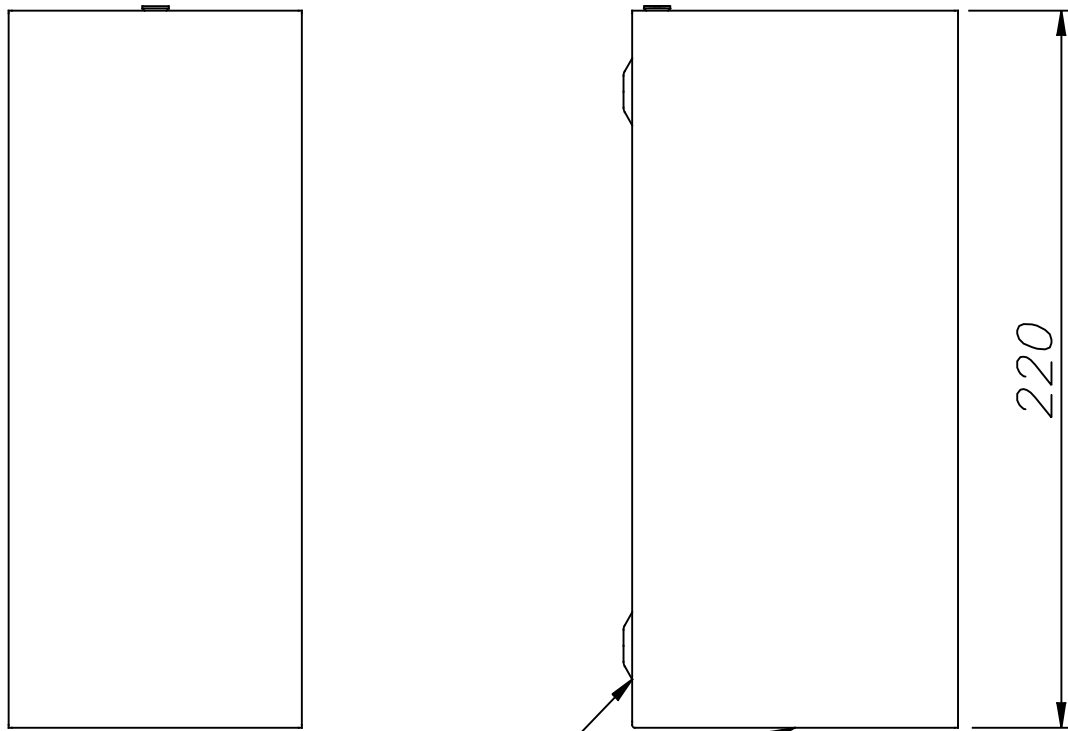
Luminaire
 Code PX-0056-GRI
 Name WALL FIXTURES
Measuram.
 Code PX-0056-GRI
 Name WALL FIXTURES

Luminaire Flux	179.59 lm	Luminaire Power	63.80 W	Efficacy	2.81 lm/W	Efficiency	6.73%
Lamps Flux	2670.00 lm	Maximum value	60.79 cd/klm	Position	C=45.00 G=175.00	CG	Asymmetrical

Luminous Intensity Table cd/klm Table 1/1

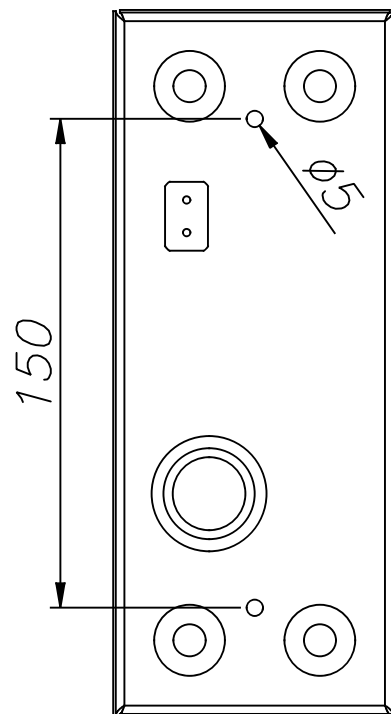
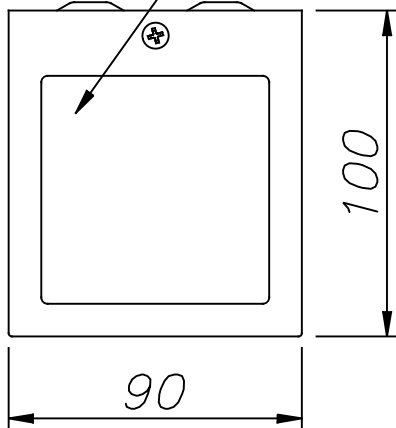
	C 0.00	C 15.00	C 30.00	C 45.00	C 60.00	C 75.00	C 90.00	C 105.00	C 120.00	C 135.00	C 150.00	C 165.00
G 0.0	56.98	56.76	57.13	56.98	57.87	57.16	58.63	56.52	57.51	56.68	57.94	57.46
G 5.0	54.72	51.87	52.73	50.15	51.85	49.22	51.66	49.25	51.25	49.25	51.81	50.57
G 10.0	46.26	41.95	42.93	39.19	40.96	37.76	40.48	38.45	40.95	38.63	41.81	40.25
G 15.0	35.92	31.45	32.11	28.66	29.99	27.25	29.26	27.77	30.04	28.13	31.01	29.70
G 20.0	26.22	22.48	23.14	20.59	21.52	19.47	20.79	19.57	21.21	19.84	22.00	20.80
G 25.0	18.27	15.70	16.47	14.89	15.63	14.21	14.97	14.04	15.13	14.06	15.36	14.12
G 30.0	12.29	10.78	11.75	10.95	11.60	10.45	10.94	10.18	10.94	10.08	10.67	9.43
G 35.0	8.16	7.30	8.31	8.09	8.64	7.60	7.92	7.33	7.97	7.22	7.29	6.23
G 40.0	5.39	4.90	5.79	5.85	6.30	5.42	5.62	5.18	5.73	5.11	4.96	4.11
G 45.0	3.57	3.30	3.96	4.09	4.48	3.81	3.93	3.61	4.04	3.54	3.36	2.73
G 50.0	2.38	2.22	2.70	2.81	3.12	2.66	2.75	2.49	2.79	2.42	2.26	1.83
G 55.0	1.59	1.49	1.82	1.89	2.14	1.84	1.92	1.70	1.89	1.61	1.52	1.20
G 60.0	1.03	0.97	1.19	1.23	1.42	1.24	1.30	1.13	1.24	1.03	0.97	0.75
G 65.0	0.61	0.56	0.73	0.74	0.90	0.76	0.83	0.68	0.76	0.59	0.56	0.39
G 70.0	0.27	0.24	0.37	0.35	0.48	0.38	0.44	0.31	0.36	0.23	0.22	0.10
G 75.0	0.00	0.00	0.06	0.03	0.12	0.05	0.10	0.00	0.03	0.00	0.00	0.00
G 80.0	0.00	0.00	0.00	0.00	0.00	0.00	0.00	0.00	0.00	0.00	0.00	0.00
G 85.0	0.00	0.00	0.00	0.00	0.00	0.00	0.00	0.00	0.00	0.00	0.00	0.00
G 90.0	0.00	0.00	0.00	0.00	0.00	0.00	0.00	0.00	0.00	0.00	0.00	0.00
G 95.0	0.00	0.00	0.00	0.00	0.00	0.00	0.00	0.00	0.00	0.00	0.00	0.00
G100.0	0.00	0.00	0.00	0.00	0.00	0.00	0.00	0.00	0.00	0.00	0.00	0.00
G105.0	0.00	0.00	0.00	0.00	0.00	0.00	0.00	0.00	0.00	0.00	0.00	0.00
G110.0	0.28	0.22	0.34	0.25	0.29	0.17	0.22	0.15	0.25	0.21	0.28	0.17
G115.0	0.65	0.60	0.76	0.65	0.69	0.51	0.57	0.48	0.63	0.58	0.65	0.50
G120.0	1.14	1.08	1.32	1.18	1.21	0.96	1.01	0.91	1.11	1.06	1.12	0.90
G125.0	1.81	1.74	2.10	1.91	1.93	1.55	1.62	1.47	1.76	1.69	1.75	1.42
G130.0	2.79	2.69	3.28	3.00	2.99	2.40	2.48	2.27	2.70	2.61	2.64	2.13
G135.0	4.29	4.16	5.06	4.63	4.61	3.69	3.79	3.45	4.10	3.95	3.98	3.18
G140.0	6.63	6.44	7.85	7.16	7.15	5.71	5.91	5.30	6.27	5.93	5.96	4.76
G145.0	10.33	10.02	12.06	11.03	11.14	8.98	9.33	8.26	9.51	8.79	8.85	7.15
G150.0	15.99	15.51	18.19	16.72	17.28	14.28	14.82	12.99	14.28	12.85	13.01	10.72
G155.0	23.93	23.26	26.67	24.68	25.96	22.25	23.19	20.08	21.21	18.51	18.70	15.75
G160.0	34.07	33.21	37.21	35.03	37.01	32.93	34.07	29.76	30.47	26.36	26.45	22.60
G165.0	45.14	44.51	48.45	46.49	48.60	44.89	45.86	41.13	41.20	36.16	36.11	31.59
G170.0	54.80	54.54	57.40	56.31	57.45	54.82	55.14	51.41	51.09	46.61	46.49	41.94
G175.0	59.66	59.99	60.75	60.79	60.46	59.71	59.30	57.75	57.27	54.77	54.79	51.94
G180.0	58.19	59.03	57.54	58.70	56.87	58.10	56.96	58.08	57.43	57.94	58.32	58.33

	C 180.00	C 195.00	C 210.00	C 225.00	C 240.00	C 255.00	C 270.00	C 285.00	C 300.00	C 315.00	C 330.00	C 345.00
G 0.0	56.98	56.76	57.13	56.98	57.87	57.16	58.63	56.52	57.51	56.68	57.94	57.46
G 5.0	52.84	55.11	54.99	57.23	57.26	58.88	59.13	57.97	57.79	58.62	58.06	58.47
G 10.0	43.64	47.52	46.78	50.76	49.60	53.18	52.06	52.44	51.44	53.91	51.82	52.97
G 15.0	32.13	36.39	35.37	39.67	37.96	41.90	39.91	41.96	40.86	44.51	41.81	42.94
G 20.0	22.02	25.57	24.74	28.24	26.31	29.36	27.28	29.70	28.91	33.18	30.70	31.71
G 25.0	14.51	16.99	16.44	18.93	17.14	18.98	17.13	19.27	18.96	22.78	21.11	21.84
G 30.0	9.36	10.97	10.71	12.28	10.75	11.66	10.38	11.87	11.92	14.93	14.05	14.49
G 35.0	6.01	7.07	6.88	7.82	6.70	7.11	6.32	7.31	7.46	9.65	9.15	9.43
G 40.0	3.91	4.57	4.45	4.99	4.19	4.41	3.94	4.55	4.72	6.19	5.93	6.13
G 45.0	2.57	2.97	2.87	3.18	2.64	2.76	2.48	2.90	3.01	4.00	3.85	4.00
G 50.0	1.71	1.96	1.86	2.03	1.67	1.74	1.57	1.85	1.94	2.57	2.50	2.63
G 55.0	1.10	1.27	1.17	1.27	1.01	1.07	0.95	1.15	1.22	1.65	1.61	1.73
G 60.0	0.67	0.78	0.68	0.74	0.56	0.60	0.52	0.67	0.72	1.01	0.99	1.10
G 65.0	0.32	0.40	0.31	0.35	0.22	0.26	0.20	0.31	0.34	0.55	0.54	0.64
G 70.0	0.03	0.09	0.01	0.05	0.00	0.00	0.00	0.04	0.05	0.21	0.20	0.29
G 75.0	0.00	0.00	0.00	0.00	0.00	0.00	0.00	0.00	0.00	0.00	0.00	0.00
G 80.0	0.00	0.00	0.00	0.00	0.00	0.00	0.00	0.00	0.00	0.00	0.00	0.00
G 85.0	0.00	0.00	0.00	0.00	0.00	0.00	0.00	0.00	0.00	0.00	0.00	0.00
G 90.0	0.00	0.00	0.00	0.00	0.00	0.00	0.00	0.00	0.00	0.00	0.00	0.00
G 95.0	0.00	0.00	0.00	0.00	0.00	0.00	0.00	0.00	0.00	0.00	0.00	0.00
G100.0	0.00	0.00	0.00	0.00	0.00	0.00	0.00	0.00	0.00	0.00	0.00	0.00
G105.0	0.00	0.00	0.00	0.00	0.00	0.00	0.00	0.00	0.00	0.00	0.00	0.00
G110.0	0.12	0.20	0.14	0.23	0.13	0.17	0.10	0.19	0.16	0.28	0.19	0.27
G115.0	0.43	0.52	0.46	0.58	0.45	0.49	0.40	0.52	0.50	0.66	0.56	0.64
G120.0	0.81	0.93	0.86	1.02	0.85	0.89	0.77	0.93	0.93	1.16	1.02	1.12
G125.0	1.29	1.43	1.38	1.62	1.38	1.42	1.25	1.49	1.52	1.88	1.64	1.77
G130.0	1.96	2.16	2.10	2.46	2.14	2.19	1.95	2.30	2.37	2.91	2.55	2.72
G135.0	2.94	3.24	3.15	3.69	3.25	3.34	2.97	3.51	3.62	4.42	3.90	4.15
G140.0	4.41	4.86	4.70	5.41	4.83	5.04	4.55	5.35	5.46	6.55	5.91	6.39
G145.0	6.67	7.28	6.87	7.71	7.02	7.49	6.85	8.03	8.04	9.43	8.87	9.81
G150.0	10.01	10.69	9.89	10.77	9.94	10.77	10.13	11.67	11.60	13.46	13.04	14.99
G155.0	14.73	15.43	13.94	14.99	13.86	15.18	14.49	16.60	16.37	19.04	18.96	22.34
G160.0	21.21	21.94	19.60	20.90	19.29	21.21	20.27	23.09	22.94	26.77	27.08	32.02
G165.0	29.78	30.62	27.42	29.15	26.82	29.38	28.11	31.78	31.51	36.50	37.12	43.07
G170.0	40.22	41.30	37.61	39.64	36.67	39.68	38.14	42.12	41.74	46.72	47.56	52.91
G175.0	50.92	52.02	48.75	50.71	47.87	50.49	48.81	52.09	51.42	54.82	55.52	58.72
G180.0	58.19	59.03	57.54	58.70	56.87	58.10	56.96	58.08	57.43	57.94	58.32	58.33

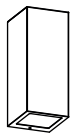


ACERO GALVANIZADO Y PINTADO
GALVANIZED AND PAINTED STEEL

CRISTAL ARENADO INTERIOR
INSIDE SANDFROSTED GLASS



PLANTILLA DE INSTALACION
INSTALLATION TEMPLATE



Cube

PX-0056

FOR
LIGHT

