



Mix Frame Ø81mm

TC-1900-BLA

Structure Mix Frame Ø81mm Aluminium White

TECHNICAL FEATURES

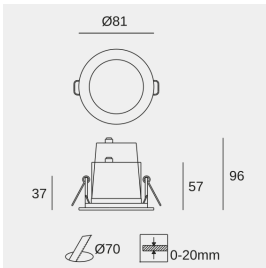


Structure material : Aluminium

Warranty : 5 Years

Structure finish : White

Easily recyclable luminaire



LUMINOTECHNIC FEATURES

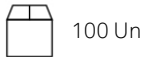
Lampholder	Quantity	Light source power (W)	Correlated Colour Temperature (CCT)
-	1	-	-

LOGISTICS

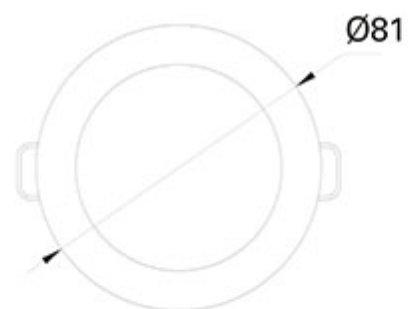
Net weight (kg): 0.04

Packaged weight (kg): 0.07

Packaging: 90mm x 90mm x 50mm



100 Un





TC-0219-BLA

Structure material: Aluminium
Dimensions: 58 x 57 x NA
Net weight (kg): 0.16



TC-1700-BLA

Structure material: Aluminium
Dimensions: 58 x NA x 57
Net weight (kg): 0.16



TC-0304-BLA

Structure material: Aluminium
Dimensions: 80 x 162 x NA
Net weight (kg): 0.54



TC-0070-BLA

Structure material: Aluminium
Dimensions: 58 x NA x 57
Net weight (kg): 0.17



TC-0511-BLA

Structure material: Aluminium
Dimensions: 58 x 57 x NA
Net weight (kg): 0.2



TC-0071-BLA

Structure material: Aluminium
Dimensions: 58 x NA x 96
Net weight (kg): 0.32



TC-0422-BLA

Structure material: Aluminium
Dimensions: 58 x NA x 96
Net weight (kg): 0.31



TC-0471-BLA

Structure material: Aluminium
Dimensions: 58 x NA x 96
Net weight (kg): 0.33



TC-0366-BLA

Structure material: Aluminium
Dimensions: 58 x 17 x NA
Net weight (kg): 0.05



TC-0070-BLA

Structure material: Aluminium



TC-0071-BLA

Structure material: Aluminium



TC-0070-BLA

Structure material: Aluminium

Dimensions: 58 x NA x 57

Net weight (kg): 0.17

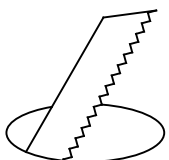
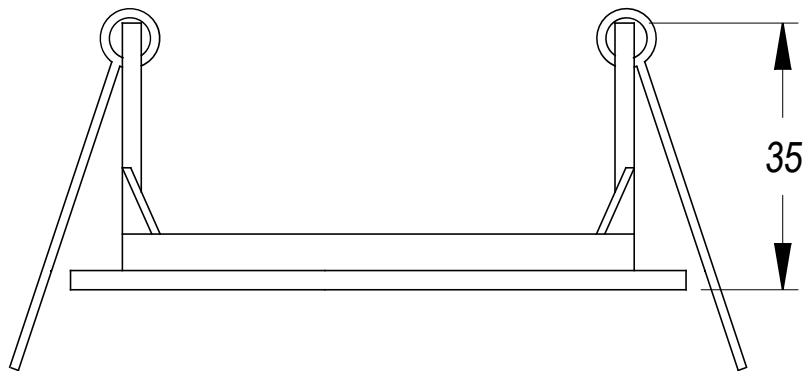
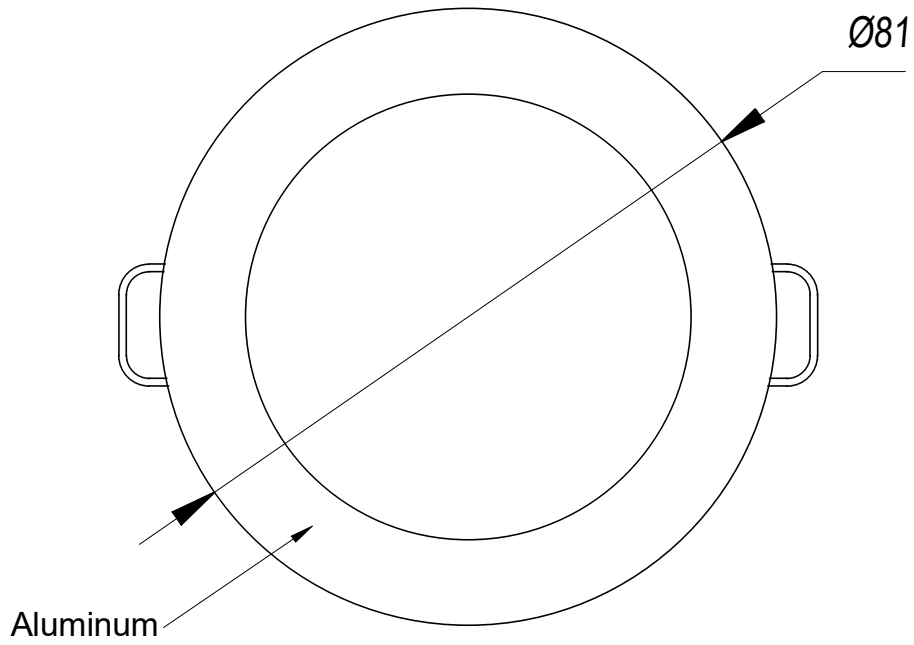


TC-0071-BLA

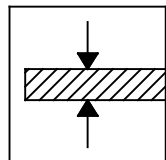
Structure material: Aluminium

Dimensions: 58 x NA x 96

Net weight (kg): 0.32

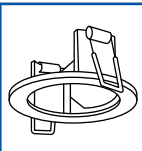


Ø70



0-20mm

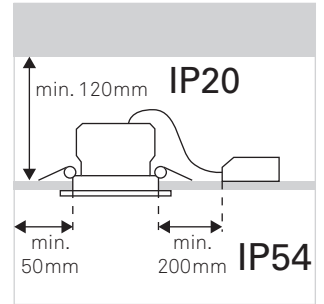
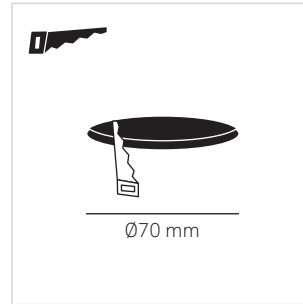
Scale 1:1



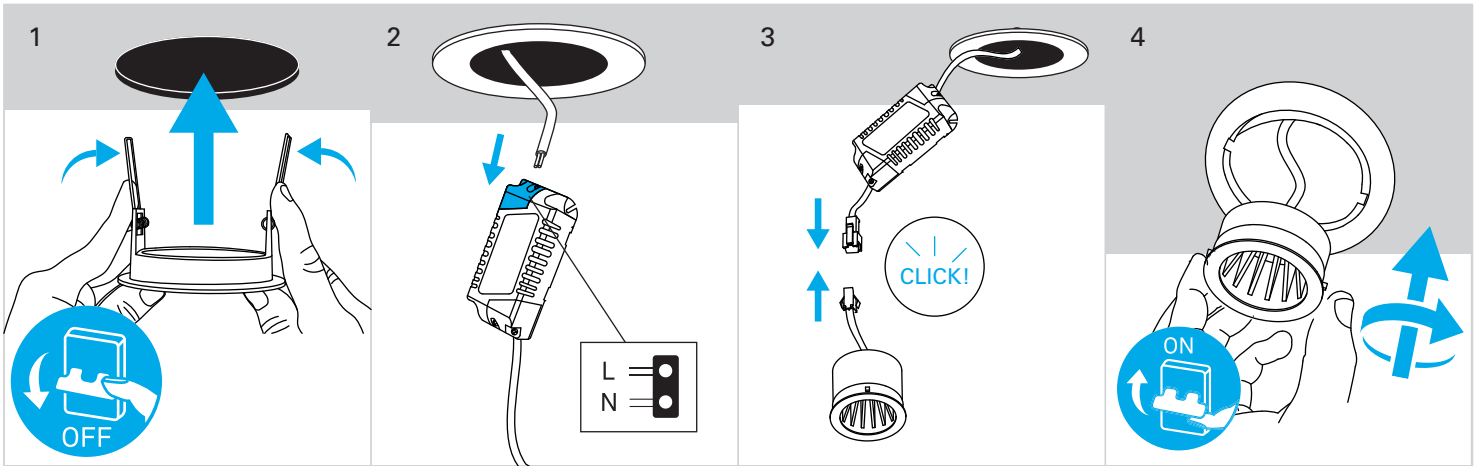
Mix

TC-1900

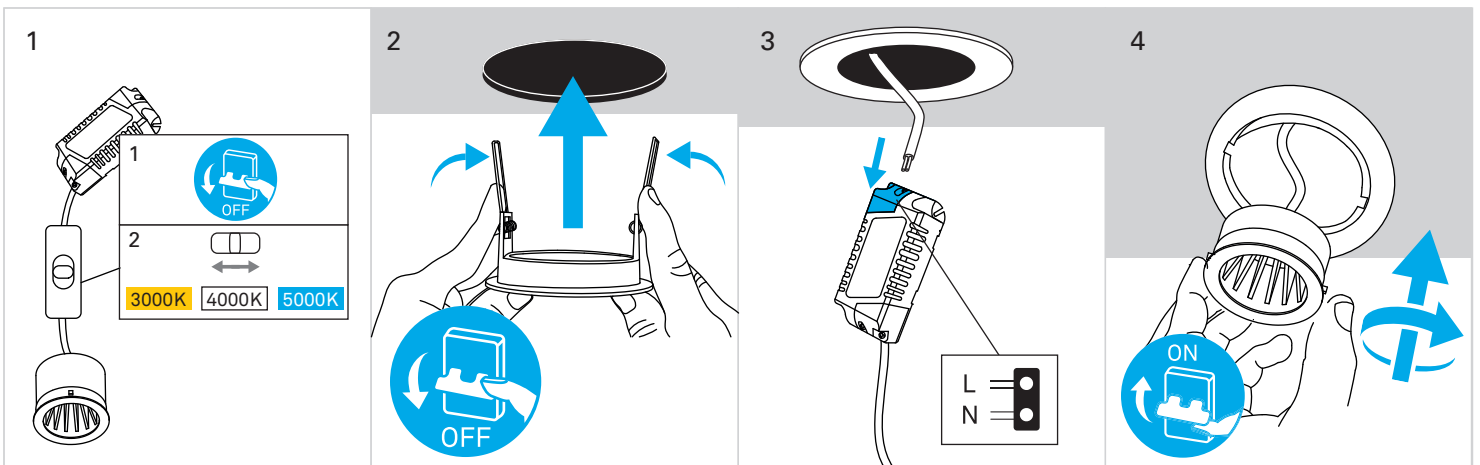
FOR
LIGHT



LED MODULE



CCT LED MODULE





GU10

