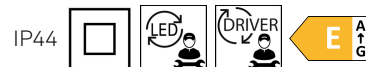
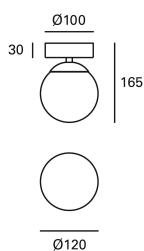


CARACTERÍSTICAS TÉCNICAS



Potencia total luminaria : 7.1W

Lúmenes reales : 624

Lúmenes nominales : 650

Lm / W reales : 88

UGR : <=22

Material de la estructura : Acero

Acabado estructura : Cromo

Material del difusor : Cristal

Acabado difusor : Opal

Voltaje / Frecuencia : 100-240V ~ 50/60Hz

Protocolo de regulación : ON-OFF

Power Factor : 0.40

Vida útil : 36.000h L70B30

Garantía : 3 Años

Luminaria fácilmente reciclable

CARACTERÍSTICAS LUMINOTÉCNICAS

CRI: 80

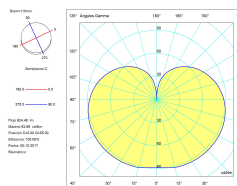
MacAdam steps: 3

Riesgo fotobiológico: RG0

UGR

UGR Transversal: 20.2

UGR Longitudinal: 20.2



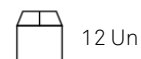
Portalámparas	Cantidad	Potencia fuente de luz (W)	Temperatura de color correlacionada (CCT)
LED	1	5.7W	3000K

LOGÍSTICA

Peso neto (Kg): 0.57

Peso embalado (Kg): 0.75

Embalaje: 170mm x 205mm x 170mm

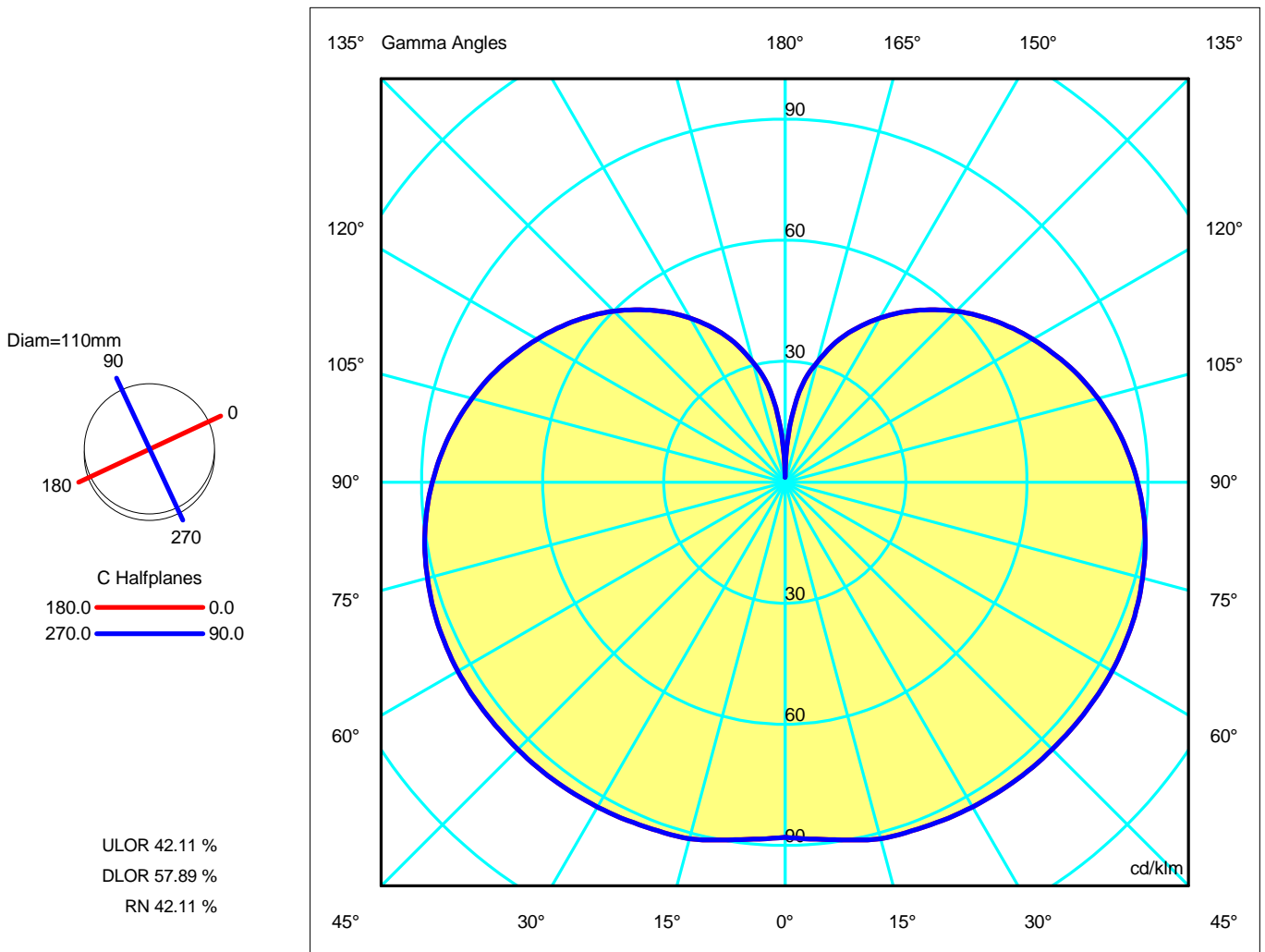


Luminaire

Code DE-0431-CRO
 Name DE-0431-CRO
Measur.
 Code DE-0431-CRO
 Name DE-0431-CRO

Luminaire Flux	624.48 lm	Luminaire Power	7.10 W	Efficacy	87.95 lm/W	Efficiency	100.00%
Lamps Flux	624.48 lm	Maximum value	93.69 cd/klm	Position	C=0.00 G=55.00	CG Double Symmetrical	
Round Luminaire Round Luminous Area		Diam.	110 mm	Height	170 mm		
		Diam.	109 mm	Height	130 mm		
Horizontal Luminous Area	0.009331 m2			Emitting area on Plane 180°	0.014170 m2		
Emitting area on Plane 0°	0.014170 m2			Emitting area on Plane 270°	0.014170 m2		
Emitting area on Plane 90°	0.014170 m2			Glare area at 76°	0.016007 m2		
Coordinate system	CG			Symmetry Type	Double Symmetrical		
Date	05-12-2017			Maximum Gamma Angle	180		
Measurement Distance	0.00			Measurement Flux	624.48 lm		
Operator	ASSELUM T2			Source Voltage [V]			
Temperature	25.00 °C			Source current [A]			
Humidity	60.00 %			Photocell			
Notes							

Line	Code	Luminaire Lamps	Flux [lm]	Pow. [W]	Q.ty
	DE-0431-CRO	Name DE-0431-CRO	624.48	7.10	1
C.I.E.	25 50 76 58 100	D DIN 5040	C11		
F UTE	0.58 J + 0.42 T	B NBN	BZ 8		





Luminaire

Code DE-0431-CRO
Name DE-0431-CRO

Measur.

Code DE-0431-CRO
Name DE-0431-CRO

Luminaire Flux	624.48 lm	Luminaire Power	7.10 W	Efficacy	87.95 lm/W	Efficiency	100.00%
Lamps Flux	624.48 lm	Maximum value	93.69 cd/klm	Position	C=0.00 G=55.00	CG	Double Symmetrical

Luminous Intensity Table cd/klm Table 1/1

	C 0.00	C 15.00	C 30.00	C 45.00	C 60.00	C 75.00	C 90.00
G 0.0	87.98	87.98	87.98	87.98	87.98	87.98	87.98
G 5.0	88.78	88.78	88.78	88.78	88.78	88.78	88.78
G 10.0	89.99	89.99	89.99	89.99	89.99	89.99	89.99
G 15.0	91.43	91.43	91.43	91.43	91.43	91.43	91.43
G 20.0	91.92	91.92	91.92	91.92	91.92	91.92	91.92
G 25.0	92.43	92.43	92.43	92.43	92.43	92.43	92.43
G 30.0	92.90	92.90	92.90	92.90	92.90	92.90	92.90
G 35.0	93.23	93.23	93.23	93.23	93.23	93.23	93.23
G 40.0	93.52	93.52	93.52	93.52	93.52	93.52	93.52
G 45.0	93.60	93.60	93.60	93.60	93.60	93.60	93.60
G 50.0	93.68	93.68	93.68	93.68	93.68	93.68	93.68
G 55.0	93.69	93.69	93.69	93.69	93.69	93.69	93.69
G 60.0	93.58	93.58	93.58	93.58	93.58	93.58	93.58
G 65.0	93.19	93.19	93.19	93.19	93.19	93.19	93.19
G 70.0	92.61	92.61	92.61	92.61	92.61	92.61	92.61
G 75.0	91.70	91.70	91.70	91.70	91.70	91.70	91.70
G 80.0	90.63	90.63	90.63	90.63	90.63	90.63	90.63
G 85.0	89.19	89.19	89.19	89.19	89.19	89.19	89.19
G 90.0	87.39	87.39	87.39	87.39	87.39	87.39	87.39
G 95.0	85.29	85.29	85.29	85.29	85.29	85.29	85.29
G100.0	82.94	82.94	82.94	82.94	82.94	82.94	82.94
G105.0	80.32	80.32	80.32	80.32	80.32	80.32	80.32
G110.0	77.44	77.44	77.44	77.44	77.44	77.44	77.44
G115.0	74.23	74.23	74.23	74.23	74.23	74.23	74.23
G120.0	70.95	70.95	70.95	70.95	70.95	70.95	70.95
G125.0	67.48	67.48	67.48	67.48	67.48	67.48	67.48
G130.0	63.85	63.85	63.85	63.85	63.85	63.85	63.85
G135.0	60.00	60.00	60.00	60.00	60.00	60.00	60.00
G140.0	55.82	55.82	55.82	55.82	55.82	55.82	55.82
G145.0	51.60	51.60	51.60	51.60	51.60	51.60	51.60
G150.0	47.02	47.02	47.02	47.02	47.02	47.02	47.02
G155.0	42.18	42.18	42.18	42.18	42.18	42.18	42.18
G160.0	37.04	37.04	37.04	37.04	37.04	37.04	37.04
G165.0	30.86	30.86	30.86	30.86	30.86	30.86	30.86
G170.0	24.44	24.44	24.44	24.44	24.44	24.44	24.44
G175.0	14.07	14.07	14.07	14.07	14.07	14.07	14.07
G180.0	1.30	1.30	1.30	1.30	1.30	1.30	1.30

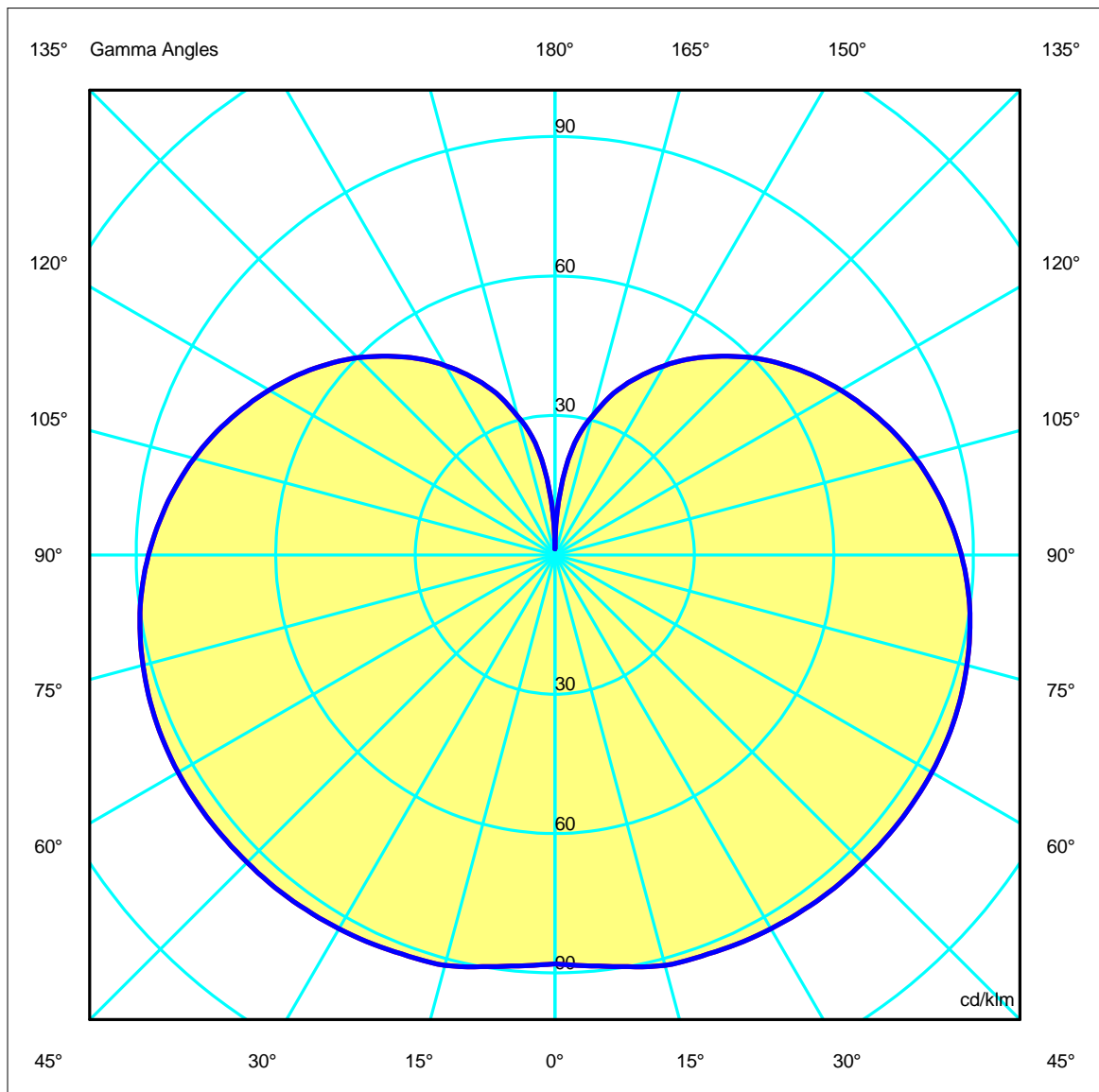
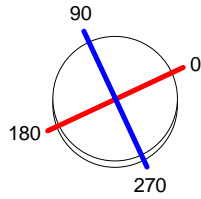
Luminaire
 Code DE-0431-CRO
 Name DE-0431-CRO
Measur.
 Code DE-0431-CRO
 Name DE-0431-CRO

Luminaire Flux	624.48 lm	Luminaire Power	7.10 W	Efficacy	87.95 lm/W	Efficiency	100.00%
Lamps Flux	624.48 lm	Maximum value	93.69 cd/klm	Position	C=0.00 G=55.00	CG	Double Symmetrical

Diam=110mm

C Halfplanes

180.0 ——— 0.0
 270.0 ——— 90.0





Luminaire
Code DE-0431-CRO
Name DE-0431-CRO
Measurem.
Code DE-0431-CRO
Name DE-0431-CRO

Luminaire Flux	624.48 lm	Luminaire Power	7.10 W	Efficacy	87.95 lm/W	Efficiency	100.00%
Lamps Flux	624.48 lm	Maximum value	93.69 cd/klm	Position	C=0.00 G=55.00	CG	Double Symmetrical

Right beam angle not found, gamma = 53

Right beam angle not found, gamma = 53

Right beam angle not found, gamma = 53



Luminaire

Code DE-0431-CRO
Name DE-0431-CRO

Measurement

Code DE-0431-CRO
Name DE-0431-CRO

Luminaire Flux	624.48 lm	Luminaire Power	7.10 W	Efficacy	87.95 lm/W	Efficiency	100.00%
Lamps Flux	624.48 lm	Maximum value	93.69 cd/klm	Position	C=0.00 G=55.00	CG	Double Symmetrical

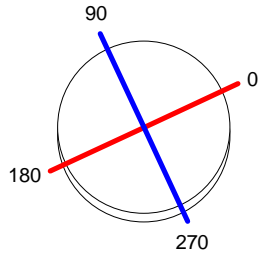
UGR
S = 0.250

Reflectancies										
Ceiling/Cavity	0.7	0.7	0.5	0.5	0.3	0.7	0.7	0.5	0.5	0.3
Walls	0.5	0.3	0.5	0.3	0.3	0.5	0.3	0.5	0.3	0.3
WorkingPlane	0.2	0.2	0.2	0.2	0.2	0.2	0.2	0.2	0.2	0.2
RoomDimensions	Viewed Crosswise					Viewed Endwise				
x=2H y=2H	13.8	14.8	14.6	15.7	16.7	13.8	14.8	14.6	15.7	16.7
x=2H y=3H	16.3	17.3	17.2	18.1	19.2	16.3	17.3	17.2	18.1	19.2
x=2H y=4H	17.6	18.5	18.5	19.4	20.5	17.6	18.5	18.5	19.4	20.5
x=2H y=6H	18.9	19.7	19.8	20.6	21.7	18.9	19.7	19.8	20.6	21.7
x=2H y=8H	19.5	20.3	20.4	21.2	22.3	19.5	20.3	20.4	21.2	22.3
x=2H y=12H	20.2	20.9	21.0	21.8	23.0	20.2	20.9	21.0	21.8	23.0
x=4H y=2H	14.7	15.6	15.6	16.5	17.6	14.7	15.6	15.6	16.5	17.6
x=4H y=3H	17.4	18.2	18.3	19.1	20.2	17.4	18.2	18.3	19.1	20.2
x=4H y=4H	18.8	19.5	19.7	20.4	21.6	18.8	19.5	19.7	20.4	21.6
x=4H y=6H	20.2	20.9	21.2	21.8	23.0	20.2	20.9	21.2	21.8	23.0
x=4H y=8H	21.0	21.5	21.9	22.5	23.7	21.0	21.5	21.9	22.5	23.7
x=4H y=12H	21.7	22.2	22.6	23.1	24.4	21.7	22.2	22.6	23.1	24.4
x=8H y=4H	19.4	20.0	20.3	20.9	22.1	19.4	20.0	20.3	20.9	22.1
x=8H y=6H	21.1	21.6	22.0	22.5	23.7	21.1	21.6	22.0	22.5	23.7
x=8H y=8H	21.9	22.4	22.9	23.3	24.6	21.9	22.4	22.9	23.3	24.6
x=8H y=12H	22.8	23.2	23.8	24.2	25.4	22.8	23.2	23.8	24.2	25.4
x=12H y=4H	19.5	20.0	20.4	21.0	22.2	19.5	20.0	20.4	21.0	22.2
x=12H y=6H	21.3	21.7	22.2	22.7	23.9	21.3	21.7	22.2	22.7	23.9
x=12H y=8H	22.2	22.6	23.2	23.6	24.8	22.2	22.6	23.2	23.6	24.8

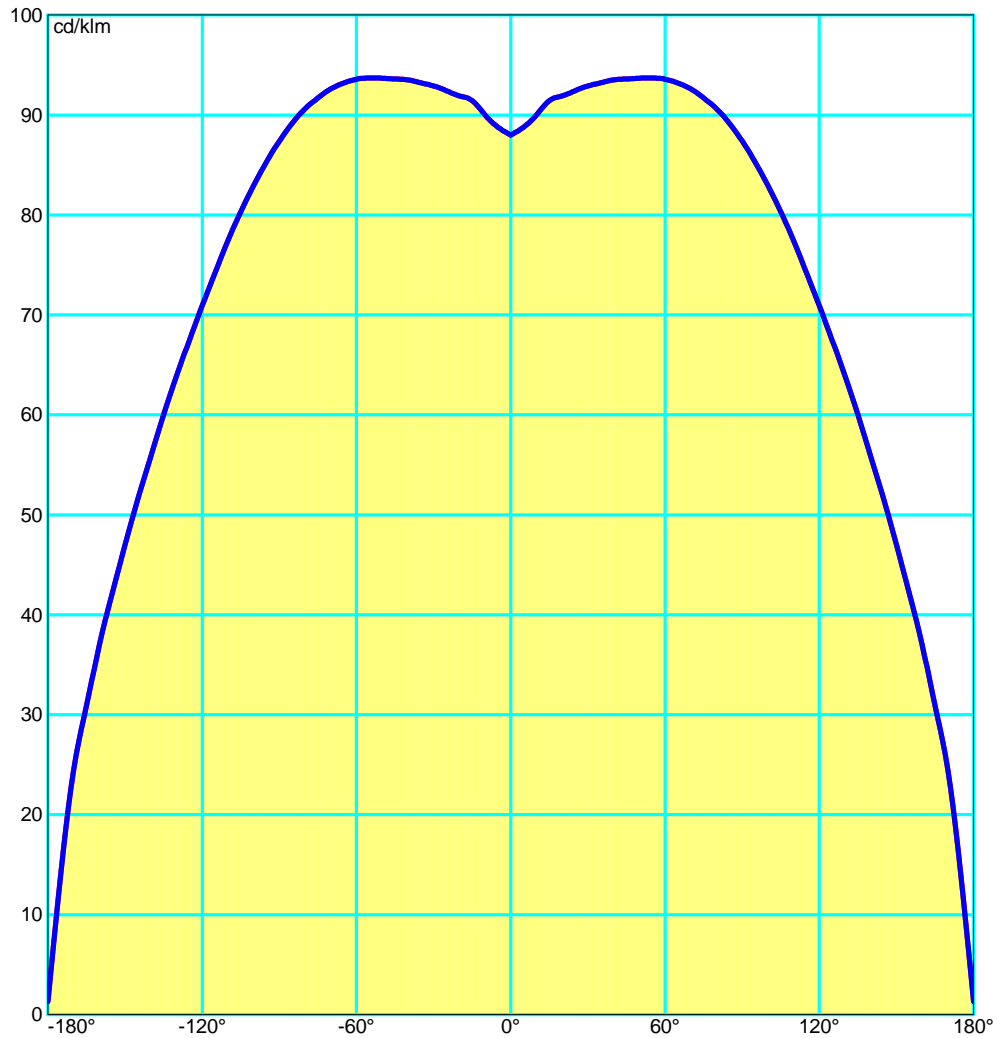
Luminaire
 Code DE-0431-CRO
 Name DE-0431-CRO
Measur.
 Code DE-0431-CRO
 Name DE-0431-CRO

Luminaire Flux	624.48 lm	Luminaire Power	7.10 W	Efficacy	87.95 lm/W	Efficiency	100.00%
Lamps Flux	624.48 lm	Maximum value	93.69 cd/klm	Position	C=0.00 G=55.00	CG	Double Symmetrical

Diam=110mm



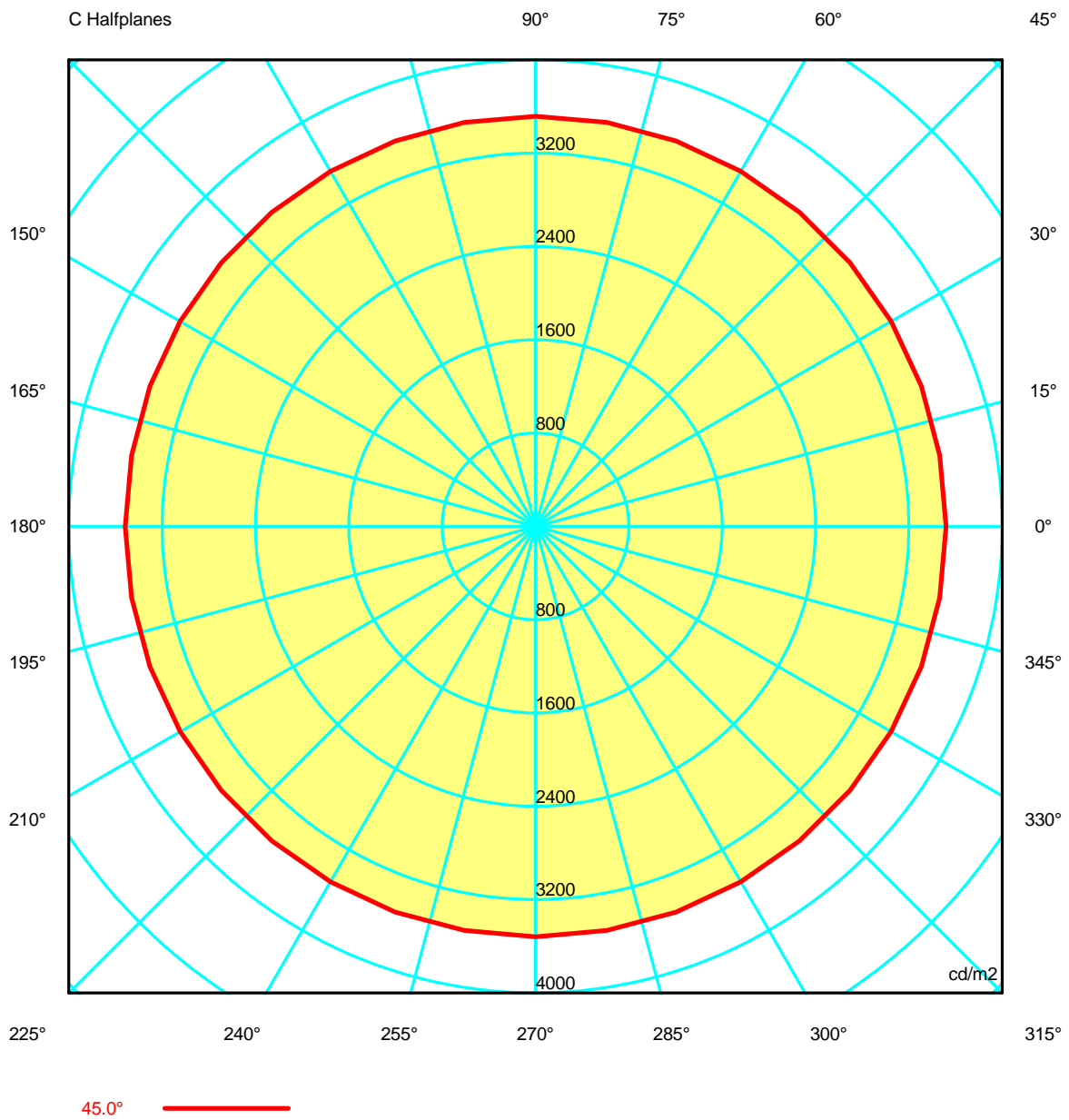
C Halfplanes



Luminaire
 Code DE-0431-CRO
 Name DE-0431-CRO
Measur.
 Code DE-0431-CRO
 Name DE-0431-CRO

Luminaire Flux	624.48 lm	Luminaire Power	7.10 W	Efficacy	87.95 lm/W	Efficiency	100.00%
Lamps Flux	624.48 lm	Maximum value	93.69 cd/klm	Position	C=0.00 G=55.00	CG	Double Symmetrical

Luminance





Luminaire

Code DE-0431-CRO

Name DE-0431-CRO

Measur.

Code DE-0431-CRO

Name DE-0431-CRO

Luminaire Flux	624.48 lm	Luminaire Power	7.10 W	Efficacy	87.95 lm/W	Efficiency	100.00%
Lamps Flux	624.48 lm	Maximum value	93.69 cd/klm	Position	C=0.00 G=55.00	CG	Double Symmetrical

Luminance cd/m2 Table 1/3

	C 0.00	C 10.00	C 20.00	C 30.00	C 40.00	C 50.00	C 60.00	C 70.00	C 80.00	C 90.00	C 100.00	C 110.00	C 120.00
G 0.0	5888.20	5888.20	5888.20	5888.20	5888.20	5888.20	5888.20	5888.20	5888.20	5888.20	5888.20	5888.20	5888.20
G 5.0	5264.62	5264.62	5264.62	5264.62	5264.62	5264.62	5264.62	5264.62	5264.62	5264.62	5264.62	5264.62	5264.62
G 10.0	4823.87	4823.87	4823.87	4823.87	4823.87	4823.87	4823.87	4823.87	4823.87	4823.87	4823.87	4823.87	4823.87
G 15.0	4502.51	4502.51	4502.51	4502.51	4502.51	4502.51	4502.51	4502.51	4502.51	4502.51	4502.51	4502.51	4502.51
G 20.0	4216.20	4216.20	4216.20	4216.20	4216.20	4216.20	4216.20	4216.20	4216.20	4216.20	4216.20	4216.20	4216.20
G 25.0	3995.61	3995.61	3995.61	3995.61	3995.61	3995.61	3995.61	3995.61	3995.61	3995.61	3995.61	3995.61	3995.61
G 30.0	3825.39	3825.39	3825.39	3825.39	3825.39	3825.39	3825.39	3825.39	3825.39	3825.39	3825.39	3825.39	3825.39
G 35.0	3691.53	3691.53	3691.53	3691.53	3691.53	3691.53	3691.53	3691.53	3691.53	3691.53	3691.53	3691.53	3691.53
G 40.0	3592.51	3592.51	3592.51	3592.51	3592.51	3592.51	3592.51	3592.51	3592.51	3592.51	3592.51	3592.51	3592.51
G 45.0	3517.36	3517.36	3517.36	3517.36	3517.36	3517.36	3517.36	3517.36	3517.36	3517.36	3517.36	3517.36	3517.36
G 50.0	3471.37	3471.37	3471.37	3471.37	3471.37	3471.37	3471.37	3471.37	3471.37	3471.37	3471.37	3471.37	3471.37
G 55.0	3450.00	3450.00	3450.00	3450.00	3450.00	3450.00	3450.00	3450.00	3450.00	3450.00	3450.00	3450.00	3450.00
G 60.0	3450.23	3450.23	3450.23	3450.23	3450.23	3450.23	3450.23	3450.23	3450.23	3450.23	3450.23	3450.23	3450.23
G 65.0	3466.73	3466.73	3466.73	3466.73	3466.73	3466.73	3466.73	3466.73	3466.73	3466.73	3466.73	3466.73	3466.73
G 70.0	3503.71	3503.71	3503.71	3503.71	3503.71	3503.71	3503.71	3503.71	3503.71	3503.71	3503.71	3503.71	3503.71
G 75.0	3556.51	3556.51	3556.51	3556.51	3556.51	3556.51	3556.51	3556.51	3556.51	3556.51	3556.51	3556.51	3556.51
G 80.0	3633.86	3633.86	3633.86	3633.86	3633.86	3633.86	3633.86	3633.86	3633.86	3633.86	3633.86	3633.86	3633.86
G 85.0	3730.92	3730.92	3730.92	3730.92	3730.92	3730.92	3730.92	3730.92	3730.92	3730.92	3730.92	3730.92	3730.92
G 90.0	3851.26	3851.26	3851.26	3851.26	3851.26	3851.26	3851.26	3851.26	3851.26	3851.26	3851.26	3851.26	3851.26



Luminaire

Code DE-0431-CRO

Name DE-0431-CRO

Measur.

Code DE-0431-CRO

Name DE-0431-CRO

Luminaire Flux	624.48 lm	Luminaire Power	7.10 W	Efficacy	87.95 lm/W	Efficiency	100.00%
Lamps Flux	624.48 lm	Maximum value	93.69 cd/klm	Position	C=0.00 G=55.00	CG	Double Symmetrical

Luminance cd/m2 Table 2/3

	C 130.00	C 140.00	C 150.00	C 160.00	C 170.00	C 180.00	C 190.00	C 200.00	C 210.00	C 220.00	C 230.00	C 240.00	C 250.00
G 0.0	5888.20	5888.20	5888.20	5888.20	5888.20	5888.20	5888.20	5888.20	5888.20	5888.20	5888.20	5888.20	5888.20
G 5.0	5264.62	5264.62	5264.62	5264.62	5264.62	5264.62	5264.62	5264.62	5264.62	5264.62	5264.62	5264.62	5264.62
G 10.0	4823.87	4823.87	4823.87	4823.87	4823.87	4823.87	4823.87	4823.87	4823.87	4823.87	4823.87	4823.87	4823.87
G 15.0	4502.51	4502.51	4502.51	4502.51	4502.51	4502.51	4502.51	4502.51	4502.51	4502.51	4502.51	4502.51	4502.51
G 20.0	4216.20	4216.20	4216.20	4216.20	4216.20	4216.20	4216.20	4216.20	4216.20	4216.20	4216.20	4216.20	4216.20
G 25.0	3995.61	3995.61	3995.61	3995.61	3995.61	3995.61	3995.61	3995.61	3995.61	3995.61	3995.61	3995.61	3995.61
G 30.0	3825.39	3825.39	3825.39	3825.39	3825.39	3825.39	3825.39	3825.39	3825.39	3825.39	3825.39	3825.39	3825.39
G 35.0	3691.53	3691.53	3691.53	3691.53	3691.53	3691.53	3691.53	3691.53	3691.53	3691.53	3691.53	3691.53	3691.53
G 40.0	3592.51	3592.51	3592.51	3592.51	3592.51	3592.51	3592.51	3592.51	3592.51	3592.51	3592.51	3592.51	3592.51
G 45.0	3517.36	3517.36	3517.36	3517.36	3517.36	3517.36	3517.36	3517.36	3517.36	3517.36	3517.36	3517.36	3517.36
G 50.0	3471.37	3471.37	3471.37	3471.37	3471.37	3471.37	3471.37	3471.37	3471.37	3471.37	3471.37	3471.37	3471.37
G 55.0	3450.00	3450.00	3450.00	3450.00	3450.00	3450.00	3450.00	3450.00	3450.00	3450.00	3450.00	3450.00	3450.00
G 60.0	3450.23	3450.23	3450.23	3450.23	3450.23	3450.23	3450.23	3450.23	3450.23	3450.23	3450.23	3450.23	3450.23
G 65.0	3466.73	3466.73	3466.73	3466.73	3466.73	3466.73	3466.73	3466.73	3466.73	3466.73	3466.73	3466.73	3466.73
G 70.0	3503.71	3503.71	3503.71	3503.71	3503.71	3503.71	3503.71	3503.71	3503.71	3503.71	3503.71	3503.71	3503.71
G 75.0	3556.51	3556.51	3556.51	3556.51	3556.51	3556.51	3556.51	3556.51	3556.51	3556.51	3556.51	3556.51	3556.51
G 80.0	3633.86	3633.86	3633.86	3633.86	3633.86	3633.86	3633.86	3633.86	3633.86	3633.86	3633.86	3633.86	3633.86
G 85.0	3730.92	3730.92	3730.92	3730.92	3730.92	3730.92	3730.92	3730.92	3730.92	3730.92	3730.92	3730.92	3730.92
G 90.0	3851.26	3851.26	3851.26	3851.26	3851.26	3851.26	3851.26	3851.26	3851.26	3851.26	3851.26	3851.26	3851.26



Luminaire
 Code DE-0431-CRO
 Name DE-0431-CRO
Measur.
 Code DE-0431-CRO
 Name DE-0431-CRO

Luminaire Flux	624.48 lm	Luminaire Power	7.10 W	Efficacy	87.95 lm/W	Efficiency	100.00%
Lamps Flux	624.48 lm	Maximum value	93.69 cd/klm	Position	C=0.00 G=55.00	CG	Double Symmetrical

Luminance cd/m2 Table 3/3

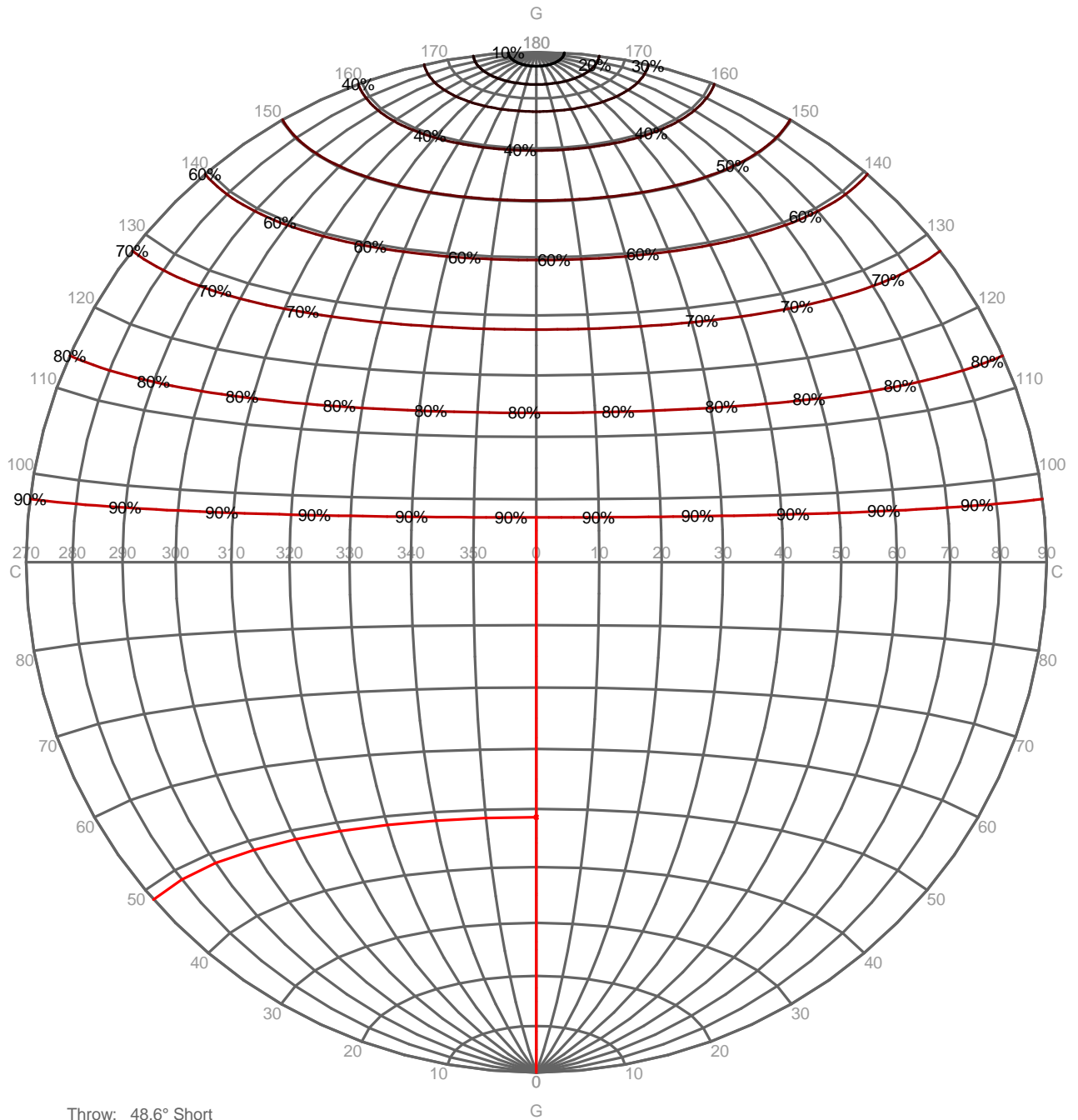
	C 260.00	C 270.00	C 280.00	C 290.00	C 300.00	C 310.00	C 320.00	C 330.00	C 340.00	C 350.00
G 0.0	5888.20	5888.20	5888.20	5888.20	5888.20	5888.20	5888.20	5888.20	5888.20	5888.20
G 5.0	5264.62	5264.62	5264.62	5264.62	5264.62	5264.62	5264.62	5264.62	5264.62	5264.62
G 10.0	4823.87	4823.87	4823.87	4823.87	4823.87	4823.87	4823.87	4823.87	4823.87	4823.87
G 15.0	4502.51	4502.51	4502.51	4502.51	4502.51	4502.51	4502.51	4502.51	4502.51	4502.51
G 20.0	4216.20	4216.20	4216.20	4216.20	4216.20	4216.20	4216.20	4216.20	4216.20	4216.20
G 25.0	3995.61	3995.61	3995.61	3995.61	3995.61	3995.61	3995.61	3995.61	3995.61	3995.61
G 30.0	3825.39	3825.39	3825.39	3825.39	3825.39	3825.39	3825.39	3825.39	3825.39	3825.39
G 35.0	3691.53	3691.53	3691.53	3691.53	3691.53	3691.53	3691.53	3691.53	3691.53	3691.53
G 40.0	3592.51	3592.51	3592.51	3592.51	3592.51	3592.51	3592.51	3592.51	3592.51	3592.51
G 45.0	3517.36	3517.36	3517.36	3517.36	3517.36	3517.36	3517.36	3517.36	3517.36	3517.36
G 50.0	3471.37	3471.37	3471.37	3471.37	3471.37	3471.37	3471.37	3471.37	3471.37	3471.37
G 55.0	3450.00	3450.00	3450.00	3450.00	3450.00	3450.00	3450.00	3450.00	3450.00	3450.00
G 60.0	3450.23	3450.23	3450.23	3450.23	3450.23	3450.23	3450.23	3450.23	3450.23	3450.23
G 65.0	3466.73	3466.73	3466.73	3466.73	3466.73	3466.73	3466.73	3466.73	3466.73	3466.73
G 70.0	3503.71	3503.71	3503.71	3503.71	3503.71	3503.71	3503.71	3503.71	3503.71	3503.71
G 75.0	3556.51	3556.51	3556.51	3556.51	3556.51	3556.51	3556.51	3556.51	3556.51	3556.51
G 80.0	3633.86	3633.86	3633.86	3633.86	3633.86	3633.86	3633.86	3633.86	3633.86	3633.86
G 85.0	3730.92	3730.92	3730.92	3730.92	3730.92	3730.92	3730.92	3730.92	3730.92	3730.92
G 90.0	3851.26	3851.26	3851.26	3851.26	3851.26	3851.26	3851.26	3851.26	3851.26	3851.26

Luminaire
 Code DE-0431-CRO
 Name DE-0431-CRO
Measur.
 Code DE-0431-CRO
 Name DE-0431-CRO

Luminaire Flux	624.48 lm	Luminaire Power	7.10 W	Efficacy	87.95 lm/W	Efficiency	100.00%
Lamps Flux	624.48 lm	Maximum value	93.69 cd/klm	Position	C=0.00 G=55.00	CG	Double Symmetrical

PERCENTAGE ISOCANDLES

Projection: Equal Area SLI 5.9 Tight Tilting Angle:0°

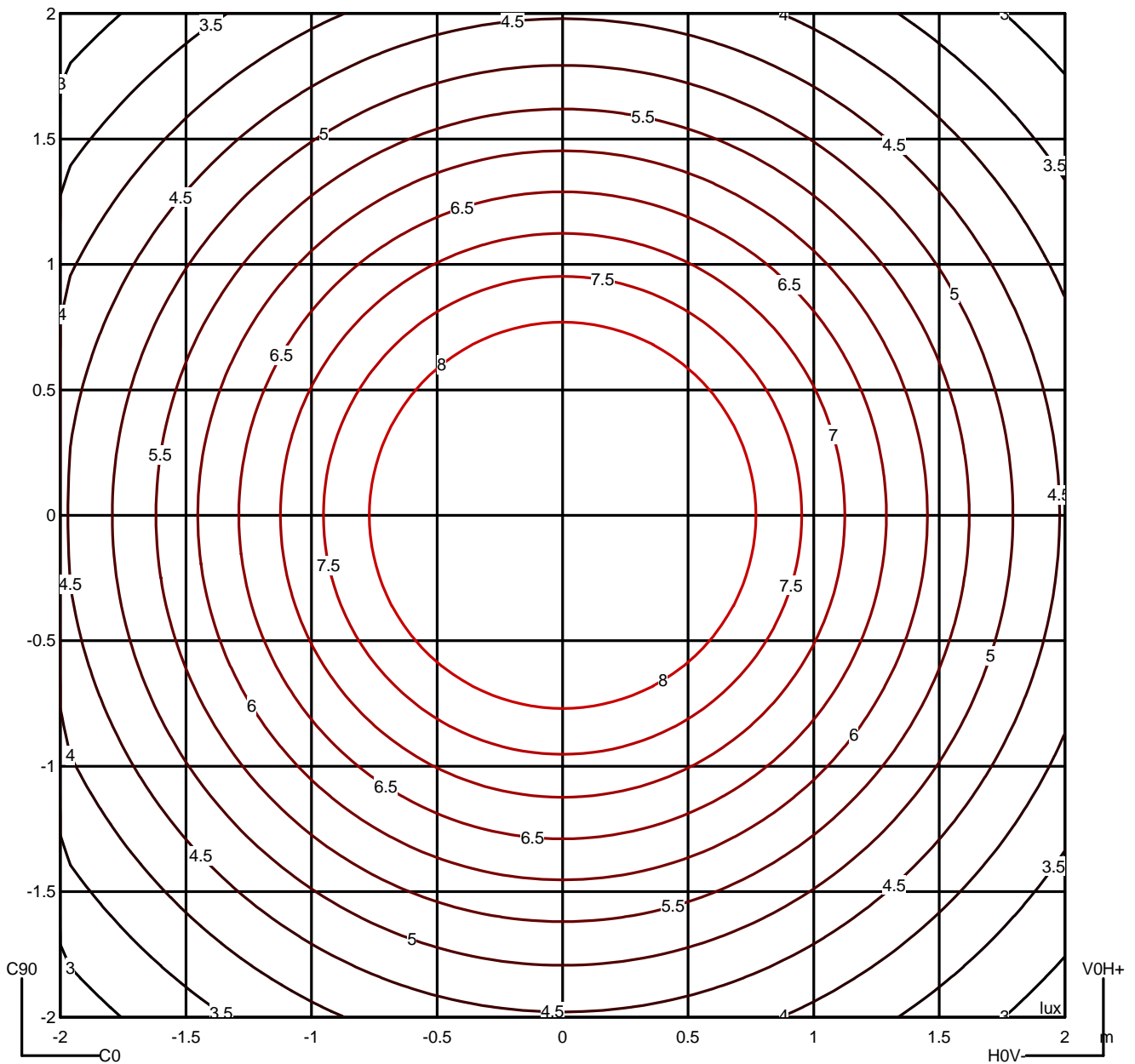


Luminaire
 Code DE-0431-CRO
 Name DE-0431-CRO
Measur.
 Code DE-0431-CRO
 Name DE-0431-CRO

Luminaire Flux	624.48 lm	Luminaire Power	7.10 W	Efficacy	87.95 lm/W	Efficiency	100.00%
Lamps Flux	624.48 lm	Maximum value	93.69 cd/klm	Position	C=0.00 G=55.00	CG	Double Symmetrical

Isolux (Floor)

Luminaire position X=0.00m Y=0.00m Z=2.50m

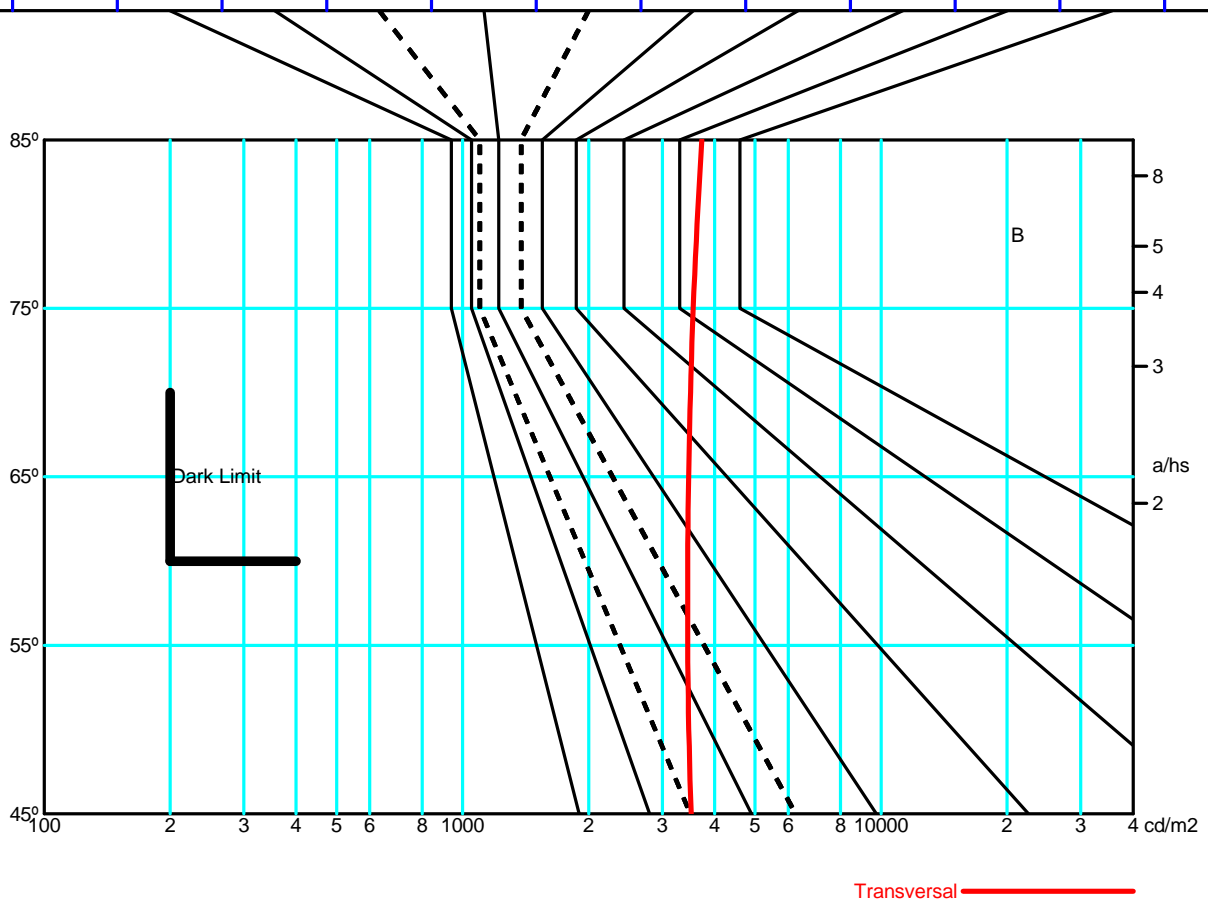


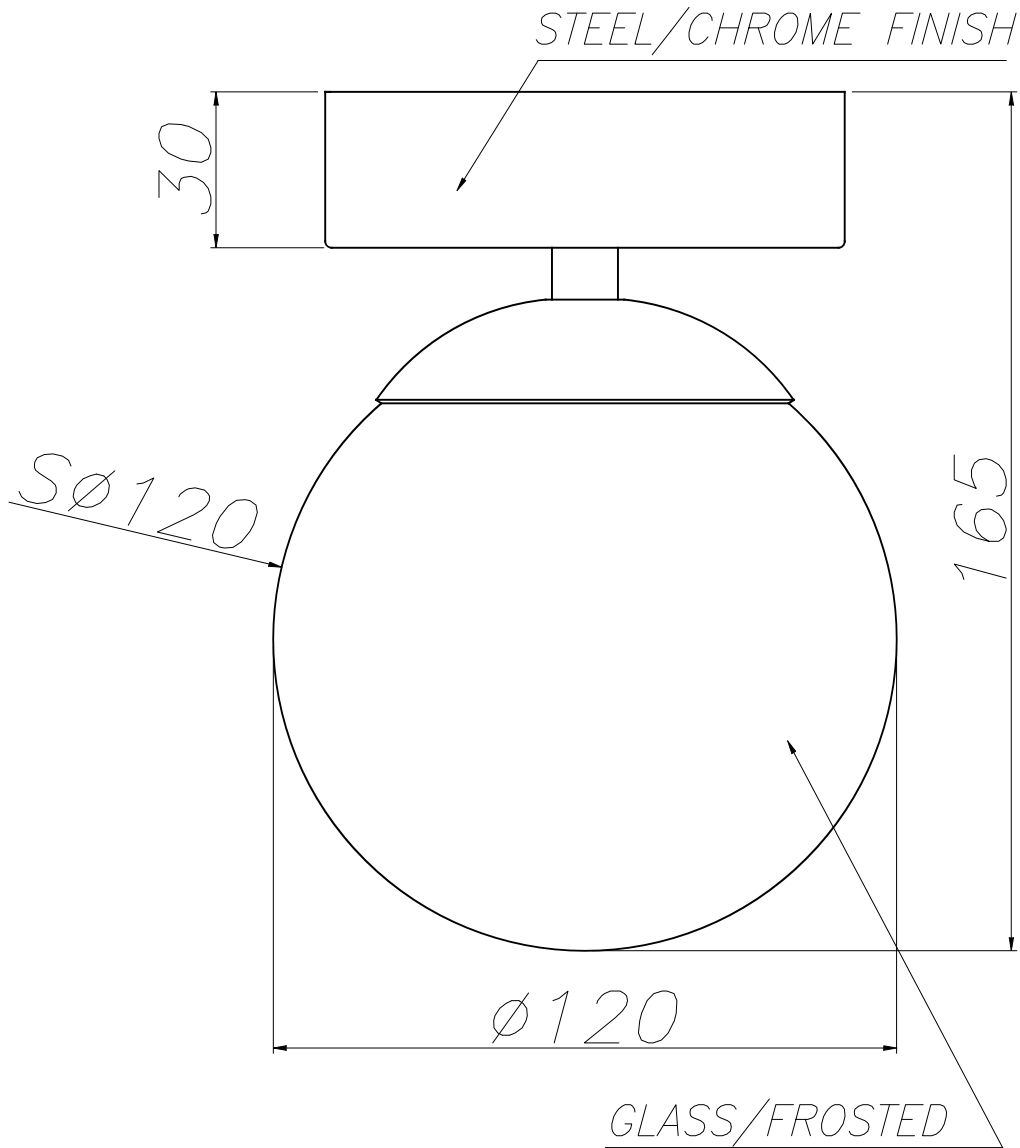
Luminaire
 Code DE-0431-CRO
 Name DE-0431-CRO
Measur.
 Code DE-0431-CRO
 Name DE-0431-CRO

Luminaire Flux	624.48 lm	Luminaire Power	7.10 W	Efficacy	87.95 lm/W	Efficiency	100.00%
Lamps Flux	624.48 lm	Maximum value	93.69 cd/klm	Position	C=0.00 G=55.00	CG	Double Symmetrical

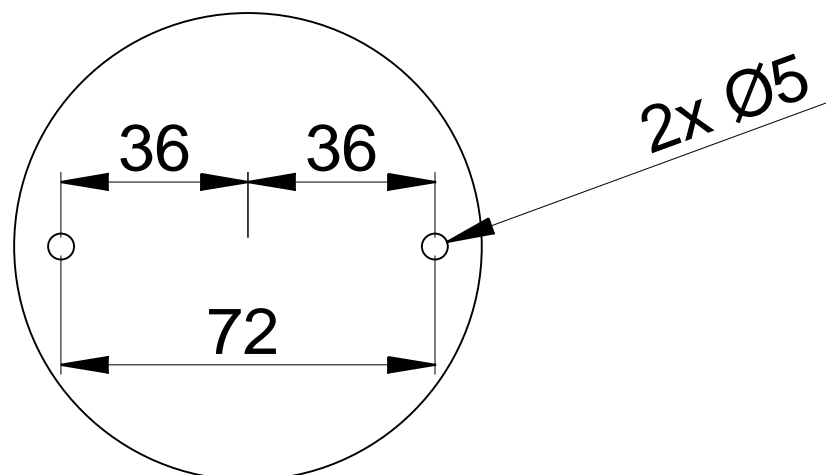
Average Luminance [cd/m ²]										
0.0°	45°	50°	55°	60°	65°	70°	75°	80°	85°	---
	3517	3471	3450	3450	3467	3504	3557	3634	3731	

Flush mounted or transversal view												
		Illumination (lx)										
A	A	2000	1000	750	500		<300					1.15
B	1		2000	1500	1000	750	500	<300				1.5
C					2000		1000	500	<300			1.85
D	2						2000	1000	500	<300		2.2
E	3							2000	1000	500	<300	2.55





INSTALLATION TEMPLATE
PLANTILLA DE INSTALACIÓN





Petit

DE-0430 DE-0431

FOR
LIGHT

